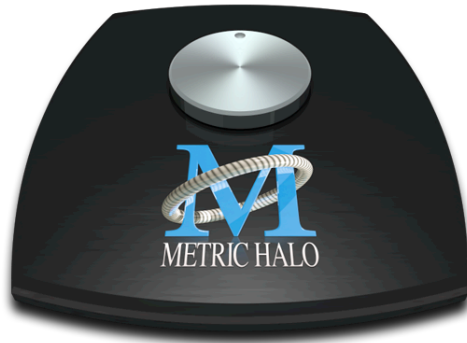


Getting Started with v.5.6.11



Introduction

Welcome to the Mobile I/O v.5 package. The v.5 software is compatible with Mobile I/O hardware that does not have a 2d Card installed (Legacy Boxes) and 2d Expanded Mobile I/Os (MIOs with 2d Cards installed). You can use MIO Console v.5 and the included driver with Legacy Boxes, 2d Expanded Boxes and mixed systems.

The v.5 package includes the following components:

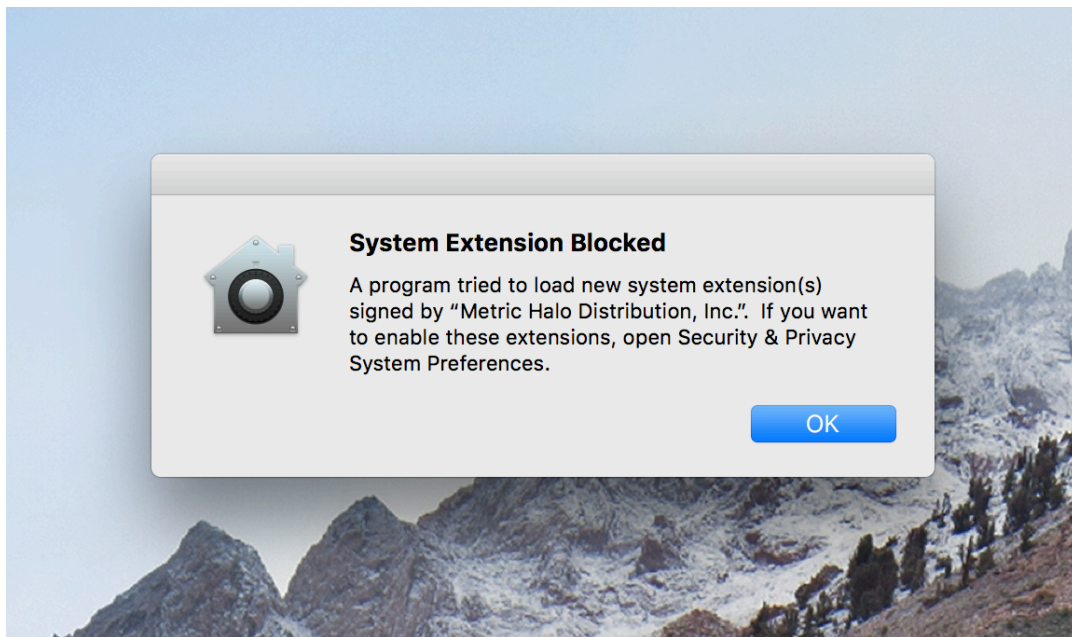
- MIO Console v.5.6.11
- MIO Driver v.5.4 Universal installer
- MIO ConsoleConnect Plug-in Installer
- Firmware:
 - v. 2.2.08 Firmware for Legacy Boxes
 - v. 5.0.45 Firmware for LIO-8, ULN-8 & 2d Enhanced Boxes
- MIO Plug-in Presets Installer
- If you received this package on CD:
 - v.5 and Hardware Documentation
 - v.5 Tutorial Movies
- If you downloaded this package, then the **v.5 Tutorial Movies** are not included in the download package, but these resources are available online:
 - [v.5 Tutorial Movies](#)

Important Note for High Sierra (10.13)

With High Sierra (macOS 10.13) Apple has introduced another layer of driver (system extension) software security. In order for third-party drivers (system extensions) to be activated on **new** installs of High Sierra, the user (you) of the computer must explicitly approve the activation, after the installation has occurred.

This activation is only required for new installs of High Sierra. If you update to High Sierra, and you already have the MIO Driver installed, the activation should not be required. After the driver has been activated, updates of the driver or installations of other new drivers provided by Metric Halo should not require activation. But if you do a fresh install of High Sierra, and then install the MIO Driver, you will need to Allow it to be activated before you can use the MIO with CoreAudio.

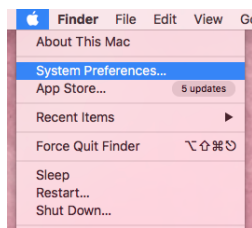
The activation event will occur the first time your box is connected after the driver has been installed. If activation is required, macOS will show an alert similar to the following:



We strongly recommend activating the driver immediately, as the Apple provided UI for activation has a timeout and will disappear after 30 minutes.

To activate the driver, follow these steps:

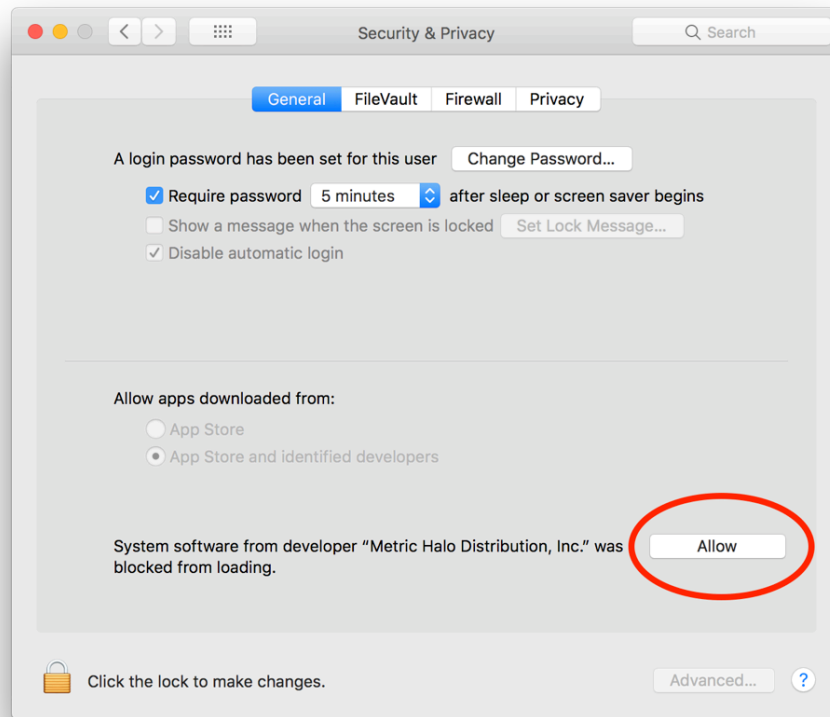
1. Open "System Preferences..." from the Apple Menu:



2. Select "Security & Privacy" (highlighted in red):



3. Click the "Allow" button (highlighted in red):



4. That's it. At this point the driver should load and your MIO will appear in CoreAudio. This approval is persistent, so you should not have to do this again, unless you do a clean install of macOS.

New Features

MIO Software version 5.6.11 fixes the following issues:

- Fixes hang on launch in MIOConsole caused by changes in macOS 10.13.4. This version is required for 10.13.4 and newer.
- Adds driver support for 10.13 (High Sierra) - earlier drivers excite a macOS bug in FireWire that will cause audio to stop playing through the MIO after a limited number of start/stop cycles.
- This driver fix also solves the audio hang issue that has occurred for all versions of macOS since 10.8; we recommend that all users update the driver.
- Fix a hang at start of record in Sierra (10.12) and High Sierra (10.13).

Metric Halo is aware of the following issues:

- The Finder and QuickTime Player in Mac OS 10.9 play mono files as silence when playing to a MIO. You can work around this by using Audio MIDI Setup to manually set the output routing for the device for the Multichannel/Stereo case to DAW 1 and DAW 2. We believe that this is a bug in Mac OS X and have reported it to Apple.

Installation

To install v.5.6.11:

1. Drag MIO Console to your computer's *Applications* folder (or wherever you like to keep your audio applications)
2. If you want to use the MIO ConsoleConnect Plug-ins, double-click the **ConsoleConnect** installer package and follow the installation steps.
3. If you want to use the Presets for the Mobile I/O +DSP Plug-in, double-click the **MIOPluginPresets** installer package and follow the installation steps.

4. If you need to update the Firmware on your Mobile I/O hardware (see above for information about what firmware should be used on your hardware) follow the instructions for firmware installation in Appendix B of the Mobile I/O Users Guide. You can view the Mobile I/O Users Guide from the Help menu in MIO Console or you can **download it from the web**.
5. Install (or update) the driver to the most recent version by double clicking the MIODriver_5.x_Universal installer package. To ensure that the new driver is loaded after the installation is complete, you should reboot your computer. After your computer has been rebooted, you are good to go. The 5.4 driver package will work correctly on all versions of Mac OS X 10.6 forward.

Important:

With the introduction of the 2d Card we have created two different branches of the MIO Firmware; you must use the correct version for your hardware, or the hardware will not function properly.

Legacy boxes continue to use the 2.x.x firmware series, which has been updated to version 2.2.05 with this release. You **must not** install the 5.x.x firmware on a box that does not have a 2d Card installed.

2d Expanded boxes (including the ULN-8 and LIO-8) require the 5.x.x firmware series to function properly. If you do not use the 5.x.x firmware with your 2d Expanded unit, the 2d Card will not be booted and you will not be able to pass audio through the box.

If your Mobile I/O had its 2d Card installed at the factory, it will have the 5.x.x firmware installed at the factory. If you are doing a field installation of the 2d Card, you will need to install the new firmware after you have physically installed the card. You **must not** install the 5.x.x firmware on a box that does not have a 2d Card installed.

Legacy Support

MIO Console v.5 fully supports Mobile I/O hardware units that do NOT have 2d Cards installed (Legacy Units). It also supports mixed systems, where you have 2d Expanded units and Legacy units online at the same time.

It is important to understand that most of the new features in v.5 rely on the presence of a 2d Card to operate. The templates include with v.5 all require a 2d Card to operate. The new mixer window requires a 2d Card. The Character processing (which is part of the v.5 mixer) requires a 2d Card. The routing function of the Monitor Controller does operate on Legacy Boxes, but the volume control aspect does require a 2d Card.

There are some features in v.5 that do apply to Legacy boxes:

- HaloVerb for +DSP
- TransientController for +DSP
- RIAA Decoder in EQ for +DSP
- Many Bug Fixes
- More +DSP plugins
- Monitor Controller routing (not level control)
- +DSP and Analog level persistent states (for stand-alone operation)
- Enhanced Record Panel

There elements of v.5 that will NOT operate on a legacy box are:

- Templates
- v.5 Mixer window/Mixer menu
- Character
- Monitor Controller level control

While we encourage you to take a look at these features to get a sense of what they may mean to your workflow if you upgrade by expanding your Mobile I/O with a 2d Card, you should not expect them to work on Legacy HW.

Important Note For Legacy Users

The v5.6 release of MIO Console marked the end of support for Legacy interfaces. Future versions of MIO Console will not be guaranteed to be compatible with Legacy interfaces and there will be no testing of future releases on Legacy devices.

We strongly recommend that you install a 2d upgrade in your interface to maintain compatibility with future releases of MIO Console. If you choose not to upgrade to 2d, installing any version of MIO Console released after v5.6 is at your own risk and we take no responsibility for its compatibility or performance.

To learn more about the 2d Card Upgrade and what it can do for your workflow, please take a look at the [2d Card Upgrade Product Page](#).

Orientation

Whether you are new to Mobile I/O or an old hand, you will find that v.5.6.11 on a 2d Expanded unit is incredibly powerful and unbelievably useful, but you will probably want to take a few minutes to get yourself oriented to the v.5.6.11 MIO way of doing things. Here are some recommendations:

- Watch the [tutorial videos](#) — these will get you started fast, and give you a quick overview of the capabilities of your new system.
- Read the documentation. It is available as a PDF file from the Help menu in MIO Console 5.6.11, or you can view the [Mobile I/O User's Guide](#), which provides online access to the documentation.

Have fun with v.5.6.11!